

FASTENS TO ANY TREE OR POLE

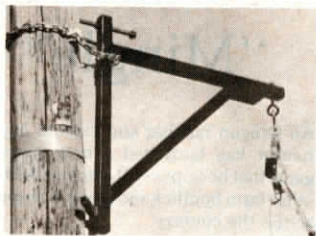
Portable Engine Hoist

"It fastens to most any tree or pole and costs two-thirds less than any conventional 1-ton hoist on the market," says David M. Nolan, president of Boston Hoist Inc., about the company's first-of-its-kind "telephone pole" portable engine hoist.

The hoist, which fits easily in the trunk of a car, simply fastens to a tree or pole with a length of chain that's tightened with a hold-down bolt. Height can be adjusted easily and, by adjusting the length of the chain, you can adapt to any dia. tree.

The lift can be used to handle any engine or to off-load equipment from trucks and trailers. It's constructed with 1/2-in. thick, 2-in. sq. steel tubing in a triangle that measures 3 ft.

"It sells for \$110, plus \$25 for a heavy-duty come-along, which is



One-ton hoist is secured to pole or tree with a chain.

about the cost for two-day rental of a conventional hoist," says Nolan.

For more information, contact: FARM SHOW Followup, Boston Engine Hoist Co., 212 Great Plain Ave., Needham, Mass. 02192 (ph 617 444-1703).

MOUNTS ON MOWER

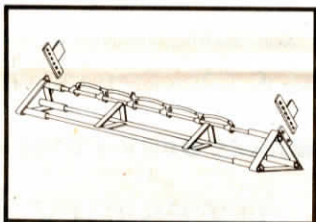
"Push-Bar" Applies Hay Drying Chemical

"Chemical drying agents reduce field curing time 50%, setting the stage for making 'hay in a day.' However, to get the most from a drying agent, it should be applied at mowing, and with equipment that coats alfalfa stems with precise accuracy."

So says a Wisconsin-based company that's developed a mower-mounted applicator that does just what the "doctor" ordered, coating the alfalfa stems with precise accuracy.

Two push bars bend alfalfa plants forward, allowing spray nozzles, mounted on a third bar, to target 80% of their output to plant stems," explains Jeff Roberts, president of Harvest Tec, Hudson, Wis., manufacturer of the "push and spray" bar.

The 3-bar assembly, made of tubular steel, mounts on the cutting head of pull-type, mounted disk or sickle mowers. (It doesn't adapt to older-style side sickle mowers). Height of



Three-bar assembly consists of two push bars and upper spray bar.

the applicator is adjustable (up to 18 in.) to get optimum "pushing" action, depending on crop height. Nozzles mounted on the spray bar are spaced 18 in. apart.

Sells for \$325 to \$460, depending on type of mower.

For more information, contact: FARM SHOW Followup, Harvest Tec., P.O. Box 63, Hudson, Wis. 54016 (ph 715 386-9100).

SITS ON BACK BUMPER

Three Pt. Hitch For Pickups

A handy new hitch that sits on the back bumper equips pickups for hauling 3 pt. hitch equipment. Comes with an optional cradle for picking up and toting 3 or 4 wheel ATV's.

It'll handle any load your pickup can handle, say inventors Steve Seymour and Kelly Baird, of Calhoun, Ky.

Sells for \$385, including hand-crank winch.

For more information, contact: FARM SHOW Followup, Steve Seymour, Rt. 1, Calhoun, Ky. 42327 (ph 502 273-5083).



Model 539, same as the old MF135, has hydraulics, 3-pt. and dual pto.

"90% OF PARTS INTERCHANGE WITH MASSEY FERGUSON TRACTORS"

'New' Yugoslav Tractors Are Really Old Masseys

A Yugoslavian tractor factory that used to be owned by Massey Ferguson still produces tractors but under a different name. A U.S. importer recently began importing the machines, which feature "90% interchangeability with MF tractors", to the U.S.

L.L. Woods of Robison & Woods Tractor Co., Inc., Guntown, Miss., says Yugoslavian I.M.T. tractors can be a real bargain. "We sell these tractors at about two-thirds the cost of a comparable, similar horsepower name-brand tractor. The great thing about it, is that 90% or more of the parts are interchangeable with Massey parts, so you can either get parts from MF dealers or from us. The advantage from getting parts from us, though, is that they're available for a fraction of the price. You can also buy our parts to fit your existing Massey Ferguson tractor."

Three models, a 39 hp., 42 hp. and a 60 hp. model are available. The 39-hp. diesel-powered model 539 which is the same as an old MF 135, is powered by a Perkins 3-cyl. engine

that hasn't changed since it was first built in 1936. Although the tractor looks like a throw-back to earlier styles, Woods says it's fitted with top-of-the-line MF-designed hydraulics and 3-pt., as well as an up-to-date electrical system. It's got a dual 540 or 1,000 pto.

The model 539 sells for \$6,800. The 42-hp. model 542 sells for \$7,800. Woods says both the low price of the tractor and the low price of parts makes the tractor an attractive option for cost-cutting farmers. "A replacement ring gear and pinion for this size tractor from Massey sells for \$650. We sell the same parts for just \$145. That's because labor costs in Yugoslavia are extremely low," he explains, noting that when it was part of the Massey Ferguson operation, the Yugoslavia operation sold tractors throughout the world.

For more information, contact: FARM SHOW Followup, Robison & Woods Tractor Co., Inc., Rt. 2, Box 36, Guntown, Miss. 38849 (ph 601 869-1028 or 357-2461).



Kelly Baird (operating winch) and Steve Seymour teamed up to develop this 3-pt. hitch for pickups.