



Gravity-flow hoppers shown mounted on Concord's precision-built tillage rig for combination seeding, deep banding and tilling.

USES GRAVITY INSTEAD OF AIR

'Affordable' New Airless Seeder

Concord's new "affordable" Gravity Flow Drill hopper gives you the option of seeding and/or deep-banding fertilizer in one pass in no-till, minimum-till or conventionally-tilled ground at two-thirds the cost of an air seeder.

It's designed to apply seed only, fertilizer only, or both (in split compartment hoppers) at rates from 10 to 300 lbs. per acre. Available in widths from 8 to 40 ft., it serves two markets:

1. For deep-banding only: For this use, the new gravity-flow hopper installs on your existing chisel plow, allowing you to deep band and chisel in one pass.

2. For seeding and deep-banding: "For this use, we don't recommend setting the Gravity Flow Drill hopper on your existing chisel plow," explains Virgil Mahlum, marketing director. "You need precision seed depth control and packing for each row, regardless of field contour. Consequently, for farmers intending to use it for seeding small grains, we sell our new Gravity Flow Drill hopper only for use on our Concord tillage rig

— the same one we designed and sell for use with our tag-along air system."

Here's how the options pencil out if you're in the market for a combination seeder-deep bander:

The Gravity Flow Drill hopper alone sells for \$4,723. A 20-ft. Concord tillage rig, which'll outfit it for both air seeding and deep-banding, has a suggested retail price of \$13,460 for a total price — together with the Gravity Hopper — of \$18,183. That's about a \$9,000 savings over Concord's 150-bu. tag-along air seeder, which sells together with a 20-ft. Concord tillage unit for right at \$27,000. "You save \$9,000 with the gravity system and still get the precision depth control and one-pass tilling, seeding and fertilizing," Mahlum points out. "However, the hopper holds only 40 bu. of grain, versus 150 or more in the air system tank, so you sacrifice capacity."

For more details, contact: FARM SHOW Followup, Concord, Inc., 2800 7th Ave. North, Fargo, N. Dak. 58102 (ph 701 280-1260).

TWO-IN-ONE SOCKET SYSTEM

"Metrinch" Socket

With a "metrinch" socket set you can replace two socket sets with one set that fits both metric and inch (S.A.E.) sized bolts.

According to Vern Linqvist, distributor of the 2 in 1 socket system, each socket fits a metric size and an inch size. For example, the 13 mm socket also fits 1/2 in. size heads. The inside of each socket has two different sets of notches within the same socket — a conventional inch size and a slightly larger metric size.

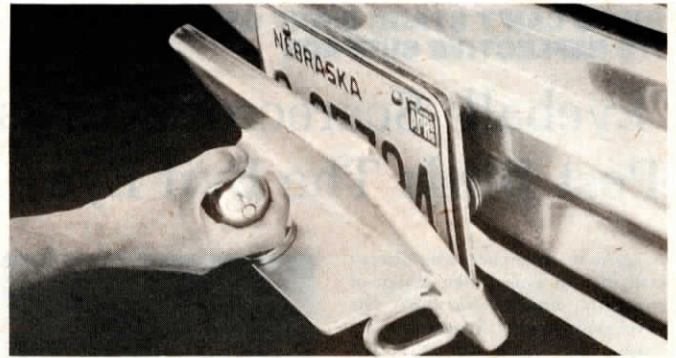
Sockets are available in 3/8 and 1/2-in. drives and as a complete set, including ratchet and extensions. Or

you can order the sockets separately for use with your existing ratchet.

A set of ten 1/2-in. drive sockets for sizes 7/16 (11 mm) to 1-in. (25 mm) sells for \$39.95.

A complete 1/2-in. drive set, including the 10 sockets, 1/2-in. drive universal joint, 2 1/4-in. extension bar, reversible ratchet and toolbox sells for \$69.95.

For more information, contact: FARM SHOW Followup, Josco 816 W. 77 1/2 St., Minneapolis, Minn. 55423 (ph 612 869-2468).



License plate is attached to mounting bracket which is permanently and inconspicuously bolted to the bumper.

SLIPS ON AND OFF IN SECONDS

Removable Front Bumper Hitch for Cars, Pickups

Here's a handy new removable front bumper ball hitch for cars and pickups that slips on and off in a matter of seconds.

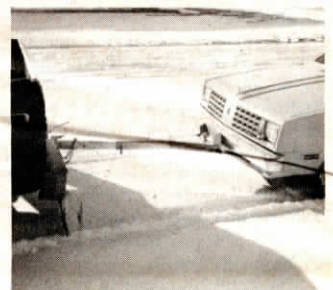
Called the Wag-Hitch, it's great for backing wagons, trailers, boats and other equipment into tight quarters from the front of your vehicle, or for towing your car or pickup behind a tractor or combine when going to the field, or down the road.

The front hitch, which also comes in handy if the vehicle has to be winched or pulled out of a mud hole or snow drift, consists of a mounting bracket (pull plate) centered on the front bumper. You drill four holes and permanently mount the bracket, which is hidden behind the front license plate. The ball portion of the Wag-Hitch assembly slips over the mounting bracket (no need to remove the license plate) in a matter of seconds and is secured with a slip-in pin.

Two models are available:

Class 1 Wag-Hitch: It's designed for easier maneuvering of boats, wagons, trailers or other equipment into tight quarters. You simply slip the Wag-Hitch onto the mounting bracket, then hook the tongue of the wagon, boat or trailer onto the ball of the Wag-Hitch.

Class 2 Wag-Hitch: It's heavier-built, allowing the vehicle on which it's used to be towed to the field, or down the road. Unlike the lighter Class 1 hitch, the Class 2 is designed to accept a standard tow bar. You



Heavier Class 2 Wag-Hitch has a ball hitch and is also designed to accept a tow bar.

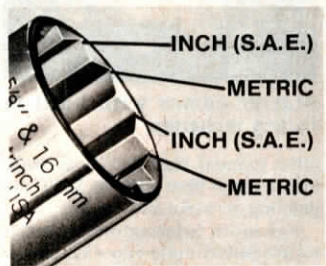
simply slip the tow bar into position on the hitch, then secure it with a horizontal slip-in pin.

"The same mounting bracket (pull plate) is used for Class 1 and Class 2 hitches, both of which are S.A.E. tested and approved," explains Larry Koch, manufacturer. "You can equip several vehicles with standard mounting brackets, which are hidden from view behind the license plate and have no unsightly or shin-busting protrusions. You then buy only one wag ball hitch assembly and move it from one vehicle to another as needed."

The Class 1 Wag-Hitch kit, complete with mounting bracket, accepts ball hitches up to 2 in. in dia. and retails for \$74.95. The Class 2 kit accepts ball hitches up to 2-5/16 in. and retails, with bracket, for \$89.50. Extra standard mounting brackets retail for \$22.50.

Koch notes that some customers have installed the removable Wag-Hitch on the rear bumper of cars and pickups. "We haven't tested the hitch for rear mounting and therefore can't recommend it for this application. For farmers wanting to try it, we'd suggest using only the heavier duty Class 2 Wag-Hitch. You'd also have to beef up the bumper to withstand the pulling strain."

For more details, contact: FARM SHOW Followup, Woody's Welding Inc., 121 North Waldom Ave., Grand Island, Neb. 68801 (ph 308 382-3486).



Each socket fits both inch and metric.