

Weather-proof scale is accurate to within .5%.

GREAT FOR DIVIDING CROPS ON SHARES

Grain Cart Has Built-In Scale

"It's great for dividing crops on shares, and for checking yields," says Brent Industries of its new Weigh Cart, the first grain cart on the market to come factory-equipped with a digital readout scale.

"Some landlords are buying them, or paying half, for renters to use in dividing the crop at harvest," notes Russel Phelps, sales director. "With an acreage counter on your combine,

and exact weighing of grain harvested, you can now get a complete, accurate picture of your total harvest."

The weather-proof scale, available on Brent's 320, 420, 620 and 820 grain carts, is accurate to within .5%, even with the cart standing on a sidehill. Weight of the load is displayed on the digital readout in 20-lb. increments. Options include a cab-mounted indicator and, in the near future, a printer which automatically records the weight of each load.

"The built-in weighing system is built rough and rugged, same as the cart itself. You don't have to baby the Weight Cart for fear of fouling up the scale mechanism," notes Phelps.

The scale adds about \$2,200 (suggested retail) to the cost of Brent's 320 and 420 Weigh Carts, and about \$2,990 to the larger 620 and 820 models.

For more details, contact: FARM SHOW Followup, Brent Industries, Shell Rock, Iowa 50670 (ph 319 885-6571).



Vol. 10, No. 3, 1986

Publisher and Editorial Director — Harold M. Johnson
Editor — Mark Newhall
Associate Editor — Mark Jacobs
Office Manager — Joan C. Johnson

FARM SHOW is published bimonthly for \$9.95 per year (\$12.95 in Canada and foreign countries) by Farm Show Publishing Inc., P.O. Box 1029, 20088 Kenwood Trail, Lakeville, Minn. 55044. Second class postage paid at Lakeville, Minn., and Madelia, Minn. POSTMASTER: Send address changes to FARM SHOW, Box 1029, Lakeville, Minn. 55044 (ph 612-469-5572). Single copy price is \$2.00. **Publication No. 470870**

FARM SHOW does not accept advertising and focuses exclusively on new products and product evaluations.

FARM SHOW does not charge for new products or services featured in the magazine. Anyone with a new product or service of interest to farmers — whether inventor, manufacturer, marketer, distributor or whatever — is invited to contact FARM SHOW regarding possible publication.

FARM SHOW attempts to verify product claims in editorial reports and adheres to rigid standards. However, the publisher assumes no responsibility for accuracy and validity of claims.

Printed in U.S.A. All rights reserved, including the right of reproduction, in whole or in part, without written permission.

"WE THINK THE MARKET FOR HIGH-QUALITY STEEL STRUCTURES WILL COME BACK"

Kansas Firm Introduces Oxygen-Limiting Silo

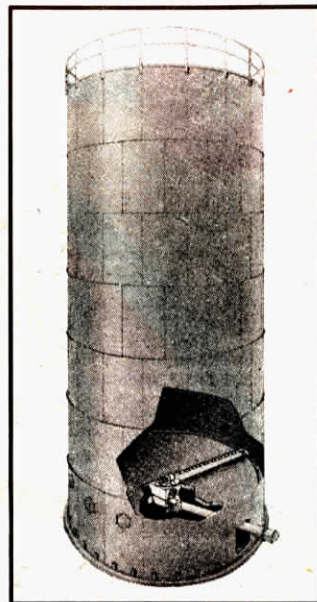
A Kansas manufacturer is going ahead with plans to introduce a new bolted-steel, oxygen-limiting silo, despite the fact that A.O. Smith Harvestore®, and other steel silo makers have experienced hard times in recent years.

"We think we've got the premiere steel structure and want to be active in agriculture when the market for steel silos comes back," says Gary Kendrick of Peabody TecTank, Parsons, Kan. The company already competes with Harvestore, and other companies, in the industrial market for steel tanks. Kendrick feels the interlocking design of the company's steel panels is stronger, more airtight, and requires less maintenance than other steel structures.

"Our panels are offset so there's no single seam up the length of the structure. Also, we use an epoxy coating rather than glass. It lets us coat all our edges, unlike glass, and eliminates the need for caulking between panels. It makes this structure much easier to tear down and move. Another advantage of our design is that we have only one exposed edge between panels, rather than two as on a Harvestore, which keeps deterioration to a minimum," says Kendrick.

The company maintains that the epoxy coating, plus the strength of the silo, make it the ideal structure for storage of silage, haylage and high-moisture corn. "Other structures are built for one commodity or another and they have problems where the farmer switches to another commodity," explains Kendrick.

The company initially wants to put



Epoxy-coated silos will be equipped with Laidig bottom unloaders.

out a limited number of silos throughout the U.S. Silos are fitted with Laidig auger-type bottom unloaders. Peabody also makes manure slurry storage tanks and markets them to the ag market through Butler Manufacturing Co.

For more information, contact: FARM SHOW Followup, Gary Kendrick, Peabody TecTank, P.O. Box 996, Parsons, Kan. 67357 (ph 316 421-0200).

HYDRAULIC SPIKES EXTEND AND RETRACT IN SECONDS

"Gripwheel" Boosts Traction

You've never seen a tractor traction device like the new "Gripwheel" developed by an English company to fit on any tractor or combine.

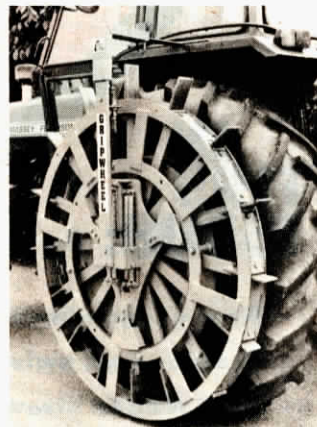
Robert Gething, president of Cameron Gardner, Ltd., the manufacturer, says a single hydraulic ram at the center of the Gripwheel extends the spikes in less than a second to provide instant traction or braking where needed. No welding is required and the spikes can be taken off by simply removing 4 bolts.

Gripwheel spikes are 6 in. long, 3 in. wide and 1/2 in. thick. They're made from spring steel with high tensile strength that's 2 1/2 times stronger than ordinary steel. The spikes retract at the top of the wheel on every revolution to clean off dirt and mud. If necessary, each spike can be quickly replaced by removing just one set screw.

Gripwheels install by attaching a strong steel ring inside the tractor wheel rim. This ring, which uses existing bolt holes and adds strength to the wheel, remains in place even when the Gripwheel — which bolts to this ring — is removed.

Gripwheel is designed to fit 30, 32, 34 and 38 in. rims. The single-acting hydraulic cylinders are connected together by a Tee adaptor so that only one external valve is used. The company is looking for U.S. and Canadian distributors.

For more information, contact: FARM SHOW Followup, Robert Gething, H. Cameron Gardner Ltd., Bath Road, Woodchester, Stroud, Gloucestershire England GL5 5EX (ph 045 383 2526).



Spiques retract at top of wheel on every revolution to clean off dirt, mud.