

USES HIGH PRESSURE TO FORM DENSE BRIQUETTES

Dutch Machine Turns Manure Into Fuel, Feed

Dutch farmers have found a new use for the manure in their barns and feedlots. With the help of a new machine, they turn it into briquettes that burn like firewood or they mix it with straw and feed it right back to livestock.

Walt Wermerskirchen, Park Rapids, Minn., has begun marketing the innovative new machine in the U.S. and Canada. "You can also use it to compress straw, hay, paper, peat, compost and just about any other combustible material. If the material is too dry, the machine is designed to add water to bring it up to the optimum moisture content of about 30%."

The machine is manufactured by Kusters Venlo Mfg. in Holland, a company that also makes manure burners specifically designed to burn compressed manure. One large poultry farm in Holland is almost totally energy independent thanks to manure burners that heat its broiler houses. Because manure that's got 50% or less moisture makes the best briquettes, poultry litter is ideal for compressing. Manure over 50% moisture can also be compressed if mixed first with straw, cornstalks, or other crop residue.

Wermerskirchen says manure is

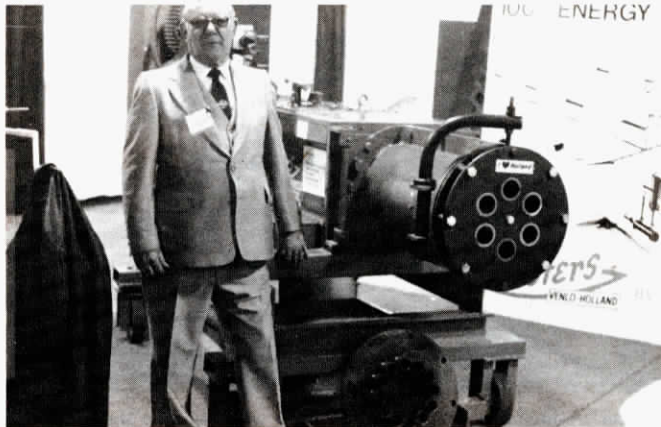


Dies are available to make 1 to 2½ in. dia. briquettes.

easy to use and burns hot. The only drawback to it is that it's got a high ash content of 17 to 19% so it requires an effective cleanout system.

The briquetting machine uses a screw-type extractor to compress the manure under tremendous pressure. The round briquettes are extruded through metal dies which are available in sizes ranging from 1 to 2½ in. in dia. Depending on the moisture content of the manure being compressed, it'll make more than 4 ton of briquettes per hour. Manure is simply dropped in the hopper at rear and the extruder screw takes it out automatically. Because of its simplicity, Wermerskirchen says the machine is easy to service.

Power is provided by either a 3-hp. 3-phase electric motor or a 70 to 75 hp. tractor pto. Wermerskirchen says



Some farmers are interested in combining compressed manure with grain or forage for use as livestock feed.

some farmers are interested in pelleting manure and bagging it up for sale in stores, the same way farmers and others on peat land now bag peat up for sale to people with wood stoves or burners.

In the few months he's had the machine in the U.S., Wermerskirchen says many poultry growers and cattle feeders have expressed interest in compressed manure combined with grain or forage for use as feed. Many

cattle feeders already feed manure and they feel that in briquette form it could become a more easily commercialized feed.

The briquetting machine sells for \$39,600.

For more information, contact: FARM SHOW Followup, Walter Wermerskirchen, Company, Niawa Star Route, Park Rapids, Minn. 56470 (ph 218 732-4180).

YOU ONLY HAVE TO WALK A FEW STEPS TO UNLOAD EVEN THE LAST BALE

Labor-Saving Bale Wagon Has Built-In Conveyor

Latest concept in bale wagons is a labor-saving, semi-automatic model which features a built-in conveyor that carries bales to the front of the wagon and unloads them right into the bale elevator.

Designed and manufactured by Meyer's Mfg., Dorchester, Wis., the wagon features a bale-conveyor type chain. Powered by tractor pto, the chain runs the entire length of the wagon.

It's covered by six, 32-in. long shields. As you unload the first few bales from the front of the wagon, you

lift the first shield. As you work your way back, you lift each successive shield until you reach the back of the wagon. The hinged shields hook onto the side wagon rails to stay in place while unloading. You flip them back down over the chain before reloading the wagon.

A fiberglass chute attaches to the front of the box in seconds and guides bales into the elevator. The wagon has square tubing sides and a 2-in. plank floor.

It's 9-ft. wide and available in 18 and 20-ft. lengths. A 9 by 20-ft. wagon



Conveyor carries bales to front of wagon and into fiberglass chute that drops them into elevator.

sells for \$1,850 (running gear not included). The pto shaft (\$130) and fiberglass chute (\$135) are sold separately.

For more information, contact: FARM SHOW Followup, Meyer's Mfg., Dorchester, Wis. 54425 (ph 715 654-5132).

POWERED BY TRACTOR HYDRAULICS OR BATTERY

New Winch Fits On Tractor 3-Pt.

"I had so many people ask how they could put a winch on their tractor 3-pt. that I decided to design and sell one," says Bob Peterson, president of Allied Power Products, Beaverton, Ore.

Peterson has the winch kits for Cat. 1 hitches and can build them for Cat.

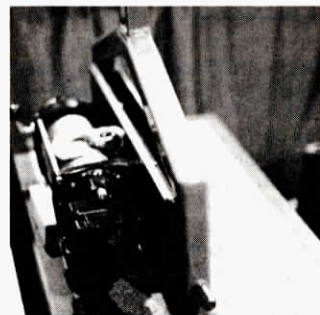
2 and 3 systems. The tractor's hydraulics or battery provide the power.

"The advantage of a hydraulically-powered winch over a pto-powered unit is that you can power the cable in or out. The power out feature — which pto systems don't have — allows you to slowly let

whatever you're hooked onto down an incline. Hydraulics also give you better control of cable speed," says Peterson.

Standard features include four guide rollers, free-spooling cable, and a cable hook. A kit for a Cat. 1 hitch sells for \$975, with the option of having 80 ft. of 5/16-in. 8,000-lb. pull cable or 100 ft. of ¼-in. 6,000 lb. pull cable.

For more information, contact: FARM SHOW Followup, Allied Power Products, Inc., 12150 SW First, Beaverton, Ore. 97005 (ph 503 626-0654).



Hydraulically-powered winch cable has unique "power out" feature.