

ASSEMBLES IN SECTIONS

Pre-Fab Farrowing Barn Sells For Half Price

"Everybody who has one of our Ham Can farrowing houses is sold on it. They can put it up for half the cost of a conventional house," says John Howerton, Chilhowee, Mo., hog producer and designer of the popular new pre-fab which you assemble in sections.

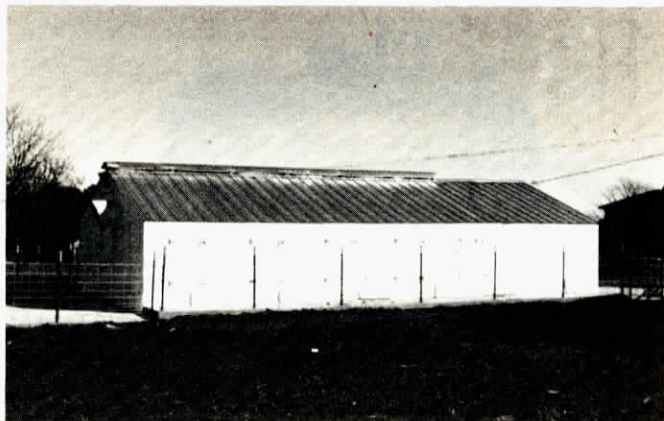
Howerton and his sons, Phil and Jim, market the "Ham Can" through H. and M. Supply. It's manufactured by Sentinel Wood Treating Co. The 10-crate or 20-crate building is pre-fabricated in 8 by 20 ft. sections and transported by truck to the building site.

Howerton says it takes his three-man crew about ten days to assemble and finish the house on the buyer's concrete foundation. He will work

with the buyer to prepare the floor and concrete work. Or, he'll help supervise if you elect to put the kit together yourself.

A 20-sow house comes in four 5-crate modules. Each section is complete with insulated ceiling and walls, glassboard interior, plywood exterior, and galvanized corrugated roof. Each module includes woven wire flooring, ridge ventilation, sow feeders, nipple waterers, heat pads, flush tanks, ventilating fans with controls, and a 60,000 BTU liquid propane heater.

Price tag for the complete 20-sow unit is right at \$23,500, plus freight. Howerton says a buyer can save money by picking up the units with his own truck. Another \$2,000 must



The Pre-Fab barn comes in four 5-crate sections. It can be assembled as either a nursery or farrowing house.

be added for the cost of putting in a concrete foundation and feeding areas.

The Howertons figure that you can have a complete 20 by 80 ft. 20-sow farrowing barn at a cost of \$1,400 per sow. And that includes a flush system, ventilation, and heat.

The "Ham Can" building also can be put together as a 10-sow farrowing house, or as a 10 or 20-pen nursery.

For more information, contact: FARM SHOW Followup, H. & M. Supply, Rt. 1, Box 164, Chilhowee, Mo. 64733 (ph 816 688-4141).

FOR PRECISE BROADCAST APPLICATIONS

Wheel "Walker" Ends Overlapping, Streaking

With the high cost of chemicals and fertilizers, you're going to like the "Walker", an easy-to-use measuring wheel. The wheel helps you to precisely measure distances to guide airplane pilots, and truck and tractor drivers helping prevent "overlaps" or "misses" as they broadcast chemicals, seed or fertilizer.

Manufactured by Aluminum Products, Stuttgart, Ark., the aluminum Walker has six spokes, each spaced 3 ft. apart at the outer ends. In one revolution of the wheel you'll measure off 18 ft. You can walk at

your own pace, without worrying about your stride length.

Weighing just 6 lbs., the wheel turns freely on a hand-held axle that turns easily even on plowed fields or on uneven terrain. Also, it's painted a fluorescent orange so it's visible up to 1/2 mile away.

Sells for \$169 for a set of two — one for each end of the field.

For more information, contact: FARM SHOW Followup, Aluminum Products of Stuttgart, Rt. 2, Box 89, Stuttgart, Ark. 72160 (ph 501 241-3611 or 241-3523).



Each spoke is spaced 3 ft. apart, so you can precisely "walk off" distances across fields.

"IT'LL HOLD 180 PSI FOR A YEAR OR MORE WITHOUT RECHARGING"

Heavy-Duty Air Bumper Is Great Pickup Add-On

If you've ever found yourself five miles from home with a flat tire but no way to fill it, you'll like the new air bumper from Platte River Welding, Oshkosh, Neb., that also features the only extendable pickup hitch on the market with no springs or catch pins, according to the company.

The 6 by 6-in. air bumper has approximately 2,178 cu. in. of air space and will hold 180 psi. for up to a year or more without losing pressure, according to Brad Koeppe, sales representative.

All fittings, gauges and a 25-ft. recoil hose come with the bumper.

The air bumper can be ordered with or without the company's telescoping hitch. The unique hitch has heavy latches that lock permanently without the aid of springs and so, according to the company, it stands up better to wear and tear, especially when used with corrosive material such as fertilizers. The lateral movement of the hitch, when extended, is 15 in. and it telescopes about 5 in.

The air bumper equipped with a



The air bumper features an optional telescoping pickup hitch that uses heavy latches instead of wear-prone springs or catch pins.

telescoping hitch sells for \$630. Both the air bumper and hitch are also available separately.

For more information, contact:

FARM SHOW Followup, Platte River Welding, Oshkosh, Neb. 69154 (ph 208 772-3780).