

High Capacity Sprayer

"It worked so well we've decided to set up a sideline manufacturing plant and make it available commercially," reports Lloyd Hunt, Hartford, Iowa, farmer and inventor of a high-capacity sprayer.

"We used to have spray equipment mounted on our 12 row planter but it got to be too much for the operator to watch and maintain. We took all spray equipment off the planter and built this high capacity pull type spray rig. With no plugged nozzles to watch or worry about, planting goes faster. And, with this wide boom sprayer, we can cover 60 to 80 acres an hour so we don't lose any time by planting and spraying in separate operations," Hunt explains.

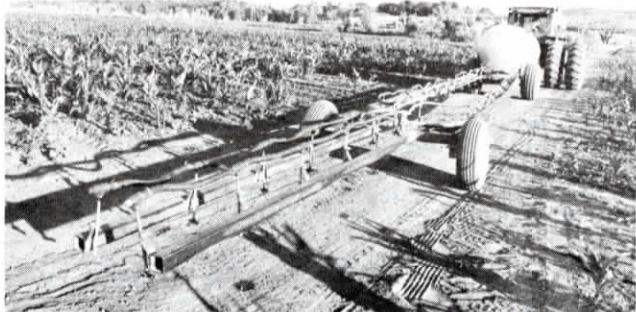
Production models of the new Hunt sprayer are available in pull type, pickup mounted or "3-wheel Floater adaption" models in widths up to 120 ft. (larger on special order). The long booms are designed to stay level with the ground without the need for leveling devices. Main frames on production

models are made of 4 by 6 in. tubing with support wheels set 360 in. from center on each side. This spacing allows the sprayer to be used on 20, 30, 36 or 40 in. rows without adjustment. The wheels pivot 90° for transport. The booms on each side are hinged to fold in two places (at 60 and 90 ft.). Spray lines are made of corrosion-resistant metal tubing.

For transport, the unit folds to a narrow 6 ft. width. It's equipped with a 1,000 gal. tank and Delevan's non-drip Raindrop nozzles. According to Hunt, it will spray accurately in winds up to 25 mph. It will adjust for height to clear the tallest crops the tractor pulling it will clear, he points out.

Booms on production models will be in a straight line the entire length (no offset as shown in prototype) and they'll ride above the stabilizer wheels rather than behind, as on the prototype.

For more details, contact: FARM SHOW Followup, Lloyd Hunt, Hartford, Iowa (ph 515 989-3250 or 3729).



Universal Wheel Weight Adapter

A universal adapter developed by Eldon Frank, Lake View, Iowa, makes it easy to "mix and match" tractor wheel weights.

His adapter plate eliminates having to buy new weights every time you trade tractors. It has bolt holes for virtually all configurations drilled into it, adapting it for most makes of tractors and weights. For example, in the above photo, the plate is adapting IH weights to a Deutz tractor.

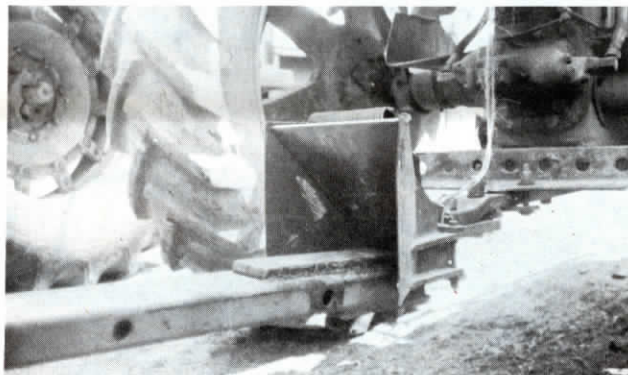
Frank is producing the adapter plates commercially in his own shop.

"I don't know of a single adapter plate that has broken" Frank told FARM SHOW. Once, in a deliberate attempt to see how much weight an adapter could withstand, he bolted it to a tractor wheel, then proceeded to bolt on tractor weights. "I quit adding more weights when I had the adapter plate carrying



12 weights weighing a total of 1,800 lbs." In another test, he bolted a second dual wheel directly to the plate. Again, it survived the test without breaking or cracking.

For more details, contact: FARM SHOW Followup, Eldon Frank, F and W. Corp., Lake View, Iowa 51450 (ph 712 664-2791).



Automatic Hitching, Unhitching

"When you hit on a good idea, you like to share it with others," says Truman Martin, Milford, Ind., dairy farmer and part owner of a small manufacturing plant which produces Stafast hitches. Impressed with performance of the hitch, which lets you hitch or unhitch wagons right from the tractor seat, Truman decided to help make it available to other farmers. "Being small farmers and small manufacturers, we cater to small farmers inasmuch as the hitch is simple to operate and economically priced," he points out.

The hitch easily adapts to any tractor drawbar, field chopper or other implement towing a wagon. Wagons to be towed with the hitch are fitted with a spring-loaded tongue assembly which holds the tongue off the ground about 16 in., and aligns

it with the tractor hitch for automatic hitching or unhitching via a rope, right from the tractor seat.

The Stafast hitch is widely used on wagons and trailers used for silo filling, corn picking and behind "throw type" hay balers. It sells for \$120, plus \$19.95 for the tongue lift assembly, Martin emphasizes that the hitch's rope-actuated pin is double spring loaded for safety. "It's not likely to be accidentally unlocked since it takes a distinct tug on the rope to activate it. The switch can be easily transferred from tractor to tractor, tractor to chopper or other implements, by removing two bolts.

For more details, contact: FARM SHOW Followup, Stafast Hitches, Truman Martin, U.S. 6 East, Rt. 1, Nappanee, Ind. 46550 (ph 219 773-4395).