

"We've found we don't even have to fasten down the snout once it's hinged," says inventor Ken McKee.

### MAKES IT QUICK, EASY TO GET AT CHAINS FOR TIGHTENING

## Hinge Kit For Deere Row Crop Headers

"We were spending two hours every other day during harvest taking the snouts off and putting them back on," says Ken McKee, Emerson, Iowa, inventor of a new hinge kit for John Deere row crop headers that makes quick work of harvest chain adjustments.

The chains under the snouts on the popular Deere header are not self-tightening and have to be adjusted regularly. McKee says removing the snout covers to get at the chain is a two-man job because they fit tightly over snaps on one side and bolts on the other. The hours he lost during harvest grew so frustrating he decided to do something about it.

What McKee came up with is a conversion kit that removes all bolts and snaps from the snouts and replaces them with a simple hinge. Now, when the chains have to be adjusted, McKee says he takes care of it in a few minutes and is on his way. "We've found that we don't even have to fasten down the snout once it's hinged. The weight of the cover holds it in place. The trick is figuring out where to weld the hinge. Our kit includes complete installation instructions," says McKee.

For more information, contact: Ken McKee, Rt. 1, Emerson, Iowa 51533 (ph 712 824-7817).

### "WE'RE GOING AFTER THIS MARKET"

## "Half-Price" Parts For Silo Unloaders

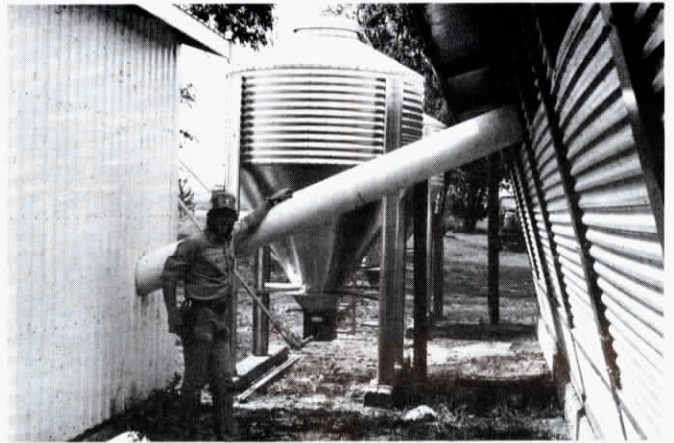
One of the oldest chain-making companies in the U.S. — The Rockford Chain Company, of Rockford, Mich. — is gearing up for the farm market with new "half price" replacement chain and parts for A. O. Smith Harvestore's Goliath and Hercules silo unloaders.

"We plan to sell our chain, which is an exact replica of the original manufacturer's chain, for less than half as much as the going retail price. Besides chain, we also plan to offer all other replacement parts for Goliath

and Hercules unloaders at half price or less," Milton Malesko, of Rockford Chain, told FARM SHOW.

"Unloader chain can be a big expense for Harvestore owners, usually wearing out in an average of two to five years. Most use them 20 to 27 ft. of chain," Malesko points out.

For more information, contact: FARM SHOW Followup, Milton Malesko, Rockford Chain Co., 4175 22 Mile Road, Utica, Mich. 48805 (ph 313 739-1200, or 517 362-0441).



The 12 in. PVC pipe runs between the farrowing house (right) and nursery.

### PROTECTS AGAINST WINTER DRAFTS

## They "Pipe" Pigs Into The Nursery

Herschel Staats

A pipeline is the first form of transportation that pigs encounter on the Bob Sundeen farm near Lincoln, Neb.

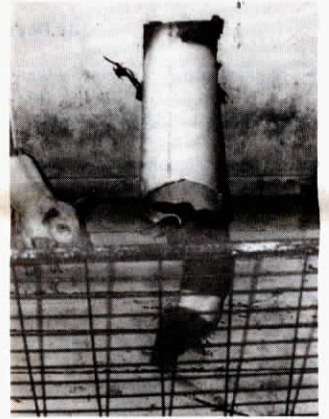
Sundeen and his wife Sue installed a 12-in. PVC pipe between their recently constructed farrowing house and an adjacent nursery building. The pipe is sloped so that the pigs slide from one building to the other.

When planning their farrowing house and nursery, the Sundeens wanted a way to keep the two buildings separated for better disease control, while still being able to keep the pigs out of drafts when transferring them from one building to another in cold weather. The pipeline idea seemed like the best solution.

The pipeline has another advantage in that it reduces the cost of equipment the Sundeens needed. Sue can easily push a cart around the farrowing house, collect the pigs and wheel them to the pipeline. In addition, no equipment returns from the nursery that could be a source of infection in the farrowing house.

To make the pigs slide through the pipe easier, water is used to dampen the slide for the first pig. The couple puts the pigs in the pipe tail-first so they can't brace their feet to stop themselves.

The Sundeens are considering a second pipeline to transfer pigs from



The slide is lubricated with water.

the nursery building to a new grower building. The grower building will let them move more pigs through the nursery by serving as a transition between the environmentally controlled nursery and open sheds in dirt lots used for finishing.

The Sundeens say they'll use 16-in. PVC for the second pipeline so the pigs can't brace themselves as easily with their backs and feet.

Reprinted with permission from Nebraska Farmer



Pigs are placed into the pipe tail-first so they can't brace their feet to stop.