

Licking action by animals, and their saliva, wears down blocks, making nutrients available.

"STANDS UP TO ANY KIND OF WEATHER"

New Mineral Block Catching On Fast

We checked with the manufacturer of Enproal, that new mineral supplement block for livestock you've been hearing about, and found out you may have trouble buying it for at least the next year.

"Our first year's production for the U.S. is about sold out," Brent Camp, vice president of VMS, Inc., Montgomery, Ala., told FARM SHOW. VMS has exclusive licensing rights in the U.S. to manufacture the block, which was developed in Australia. Most of the supply has been sold directly to major feed companies, however, and may still be available through them under the Enproal trademark. Your best bet is to contact VMS and they'll direct you to any dealers with blocks available in your area.

Enproal blocks are a molasses-based, complete mineral supplement formed through a new chemical process that leaves them undamaged by any weather, according to Camp. The blocks provide energy, protein, minerals and vitamins in a balanced ratio and can be formulated to meet varying livestock nutritional needs. He notes that "the blocks differ from other nutritional blocks, which are essentially formed by drying and do not have as complete a chemical formula. The biggest advantage with these new blocks is convenience. They do away with messy liquid tanks and the work that goes into maintaining them. The blocks are simply tossed on the ground in the field or in a feedlot."

Enproal blocks are not affected by rain or cold weather, and hot weather just makes them harder. It takes the action of animals licking, and their saliva, to wear down the blocks, mak-

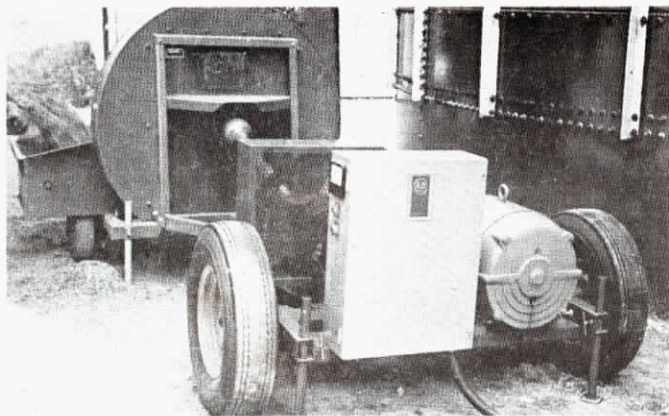
ing the nutrients available. Unlike liquids, the blocks can be kept up to seven years without nutrient loss, according to Camp.

There are seven basic Enproal formulations currently available, including three 25 lb. blocks ranging from 21 to 37% protein, and four 40 lb. energy and mineral emphasis blocks, stressing high levels of magnesium, phosphorus, calcium and other minerals. All blocks contain correct levels of all trace elements, according to Camp.

Cost of feeding a high energy Enproal block during the winter could range up to 14¢ a day per cow. "That price is reasonable when you consider how little labor is involved to get that complete a mineral ratio to the animals," explains Camp.

At present Enproal blocks have been developed only for beef and dairy cattle. Blocks for horses and swine are under development.

For more details, including availability of Enproal blocks in your area, contact: FARM SHOW Followup, VMS, Inc., Box 406, Montgomery, Ala. 36101 (ph 205 834-6510).



"For every dollar you spend operating a silo blower with the Portelectric PTO, you'll spend \$25 to do the same work with your tractor," says manufacturer.

REPLACES TRACTOR FOR OPERATING STATIONARY EQUIPMENT

Portable Electric PTO Drive

There's a cheaper way to fill silo, dry crops, pump liquid manure, grind feed or pump water for irrigation. It's Portelectric PTO, a "go anywhere" electric PTO drive unit that not only frees up your tractor for other jobs but costs a lot less to operate, according to Reuben Kottwitz, manufacturer.

"For every dollar you spend operating silo blowers, dryers and other stationary equipment with this portable electric unit, you'll spend \$25 to do the same work with your tractor," explains Kottwitz. "And, you don't have to babysit this electric drive unit. Just start it up and forget it — it takes care of itself. It will even operate in snow or rain."

The Portelectric PTO is available in single or 3-phase power (220 or 480 volts) and in sizes ranging from 20 to 100 hp. It's also available in either 540 or 1000 rpm drive, or in two speed models that operate at either 540 or 1000 rpm's.

"Our biggest seller has been the 60 hp, 540 rpm. model, but the 60 hp model operating at 1,000 rpm's is coming on strong," Kottwitz told FARM SHOW.

"If you're using a recutter in conjunction with your silo blower, we recommend using our 75 to 100 hp. model, depending on height of your silo. If you don't use a recutter, our 40 to 60 hp model at 540 rpm's should be adequate. All models will babysit themselves and work around the

clock with no oil to change, no filters to replace and no spark plugs to check, clean or adjust. About 8 of every 10 units we have sold have gone to farmers who use them primarily for operating silo blowers. Other popular uses are for pumping liquid manure, grinding feed or operating crop dryers."

Drive shafts on all models are mounted on self-aligning ball bearings for long life. Units are equipped with a magnetic starter with overload protection. Either a crossline starter or a reduced voltage starter is used, whichever the local power supplier requires. A large easy-to-read ammeter lets the operator know at all times the amount of load being applied to the unit.

"Any farm with at least 200 amps service coming into it should be able to use our Portelectric PTO," says Kottwitz.

Costs range from right at \$2,000 for the 20 hp model up to \$5,000 for the 100 hp model. The 60 hp model sells for right at \$3,500. All equipment is mounted and completely wired within the electric control box. The trailer model unit is well balanced and one man can easily maneuver it by hand if necessary, Kottwitz points out.

For more details, contact: FARM SHOW Followup, Reuben Kottwitz Manufacturing, Box 348, Watertown, Wis. 53094 (ph. 414-261-5203).

**ORDER FORM
FOR NEW
SUBSCRIBERS**

FARM SHOW Subscription Order

Yes! I want to be first to learn about latest new products. Please send me one full year's subscription (6 bi-monthly issues) at \$8.00 per year (\$14 for 2 years, \$18 for 3 years). I understand I can cancel after my first issue if not satisfied. Canada and foreign subscriptions \$11 per year.

My Check (\$_____) is Enclosed Bill Me (Your Initials_____) Check here if this is a renewal order

Name _____ (PLEASE PRINT)

Address _____

City _____ State _____ Zip _____

Make check payable to FARM SHOW. Clip and mail this coupon to: FARM SHOW, 8500 210th St., Johnson Building, Lakeville, Minn. 55044.