

**LETS YOU WORK WITH EASE ON
CARS, TRUCKS AND TRACTORS**

“Overhead Creeper” Lets You Lay Down On The Job

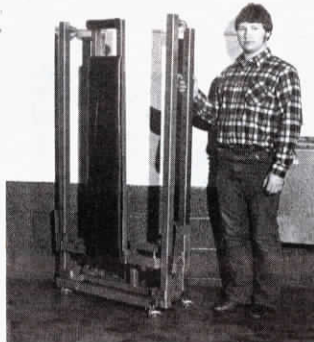
“It’s almost like having the engine on a stand,” says the manufacturer of the “Overhead Creeper”, an innovative new engine servicer for do-it-yourselfers that saves backs and time working on big equipment.

Keith Olson, of K/P Automotive Equipment Research, and his partner Patrick Halland, are mechanics who grew tired not only of sore backs but of watching profits go down the drain due to lost time on hard-to-reach engines.

“The creeper platform adjusts vertically from 23½ in. to 66 in. above the floor. The rolling base can approach the work from any angle and is designed to clear the largest truck tires. The creeper never touches the machine being worked on and thus doesn’t nick or damage fenders,” Olson explains.

“You lay down on your stomach on the creeper and, once there, you can easily pull and move yourself around the engine, thanks to six castor wheels under the platform.” Olson says you can brace the creeper when working so it won’t roll. When not in use, the creeper folds down, taking up just 18 by 34 in. of floor space.

“We feel it’s safer when working over hot engines or cold slippery surfaces. It helps prevent slips, scrapes, cuts and burns. In addition, we’ve found we can now do many



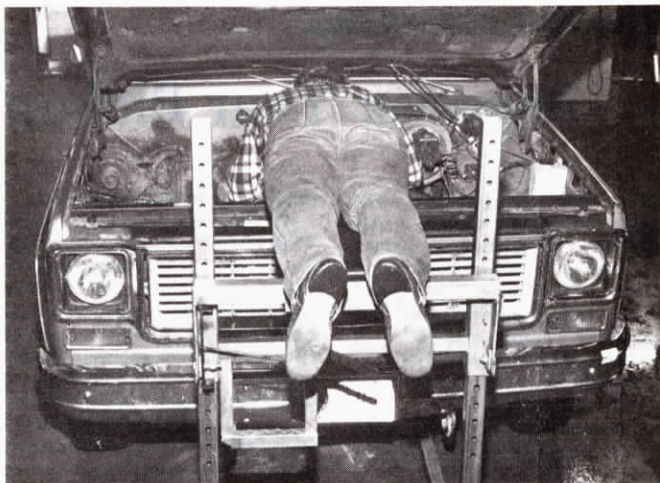
Folded, the new creeper takes up just 18 by 34 in. of floor space.

jobs twice as fast as before,” says Olson.

Besides working on pickups, trucks and cars, Olson says the creeper works well on big 4-wheel drive tractors since it can be raised alongside the machines. It’ll also double as a portable scaffold.

The creeper weighs 148 lbs. and has a rated capacity of 400 lbs. at the platform end. Sells for \$435.

For more information, contact: FARM SHOW Followup, K/P Automotive Equipment Research, Rt. 1, Box 47, Twin Valley, Mn. 56584 (ph 218 584-8550).



The creeper can be adjusted to just the right height for any engine.



Olson says the creeper works well alongside big 4-wheel drive tractors, too.

NO MOTORS, HYDRAULICS OR SPRINGS

“Affordable” One Man Hoof Trimming Chute

Every dollar you save by “doing it yourself” makes a big difference in tough times and Glen Longhorn, of Swinging L. Enterprises, Dorchester, Iowa, thinks hoof trimming is one “hired-out” activity many farmers could be doing themselves.

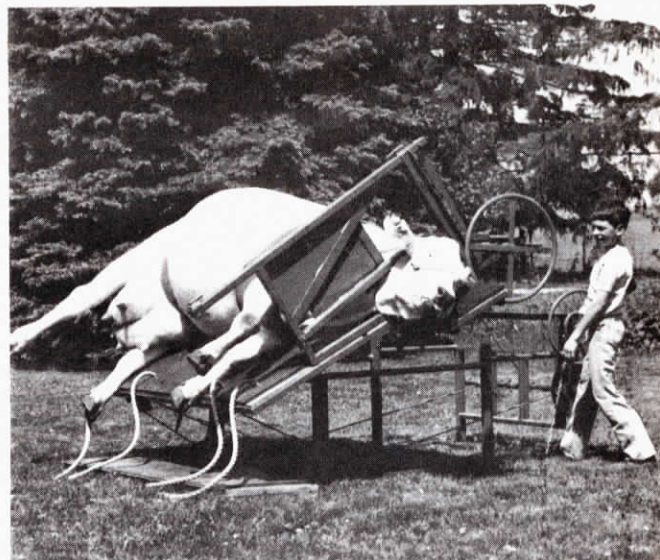
“The problem is that most chutes are so expensive it’s difficult to justify the cost. Our new cable-operated table has no motors, hydraulics or springs to maintain and is geared so that one man — even a small boy — can run it unassisted. The best news is that it sells for just \$1,400,” Longhorn told FARM SHOW.

The new “Cable L Table” is designed to handle animals ranging from a 200-lb. calf to a 3,000-lb. bull for hoof trimming, udder surgery, breeding, pregnancy checking, de-horning, clipping, castrating, and

calving. The entire table is covered with thick rubber for animal safety and comfort.

Corral panels are used to herd animals into the chute and into the adjustable headgate. Once in, the headgate is tightened and two belts under the animal’s belly are chain tightened by one of two hand-cranked pulley wheels. Then, the entire table is tilted by a wheel crank that’s outfitted with a foot brake. The brake will hold the table securely at any desired position. Rope ties are used to secure the hooves for trimming.

The new chute has been in production for only a few months but Longhorn has already sold nearly a hundred of them. Many buyers, he says, had never trimmed hooves before. “Our company is unique in that we offer a free one-day school on hoof



Longhorn says his 12 year old son can operate the chute unassisted.

trimming to anyone buying one. This school gives you the basics so all you’ll need thereafter to become an expert is practice.”

The \$1,400 price tag includes everything but over-the-road wheels,

which are optional.

For more information, contact: FARM SHOW Followup, Glen Longhorn, Swinging L Enterprises, RR1, Box 58-B, Dorchester, Iowa 52140 (ph 319 568-6040).