

Reader Letters

I can't believe the negative stories on Harvestores a person reads in FARM SHOW and other magazines. Our experience with three shelled corn and two forage units on three farms has been very satisfactory.

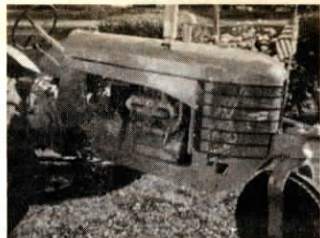
If the structures (shelled corn or forage) are air tight and okay, the rest is 100% management. Moisture content at filling is important. Some operators seem to forget that their field chopper has knives that need to be kept sharp and adjusted. And, when filling or feeding, keep lids closed.

Anybody that files suit against Harvestore wouldn't want me on the jury. I wouldn't give a disgruntled owner a penny.

Fred Bissen
Staceyville, Iowa

We really appreciate FARM SHOW'S interest in and report on the North American Riding for the Handicapped Association. We've received letters from as far away as Australia, asking for information. Also, many people called and some of the calls were heart-rending — parents who had children with a disability and were desperate to know where to find this type of help. I was able to give them the name and number of the closest "Riding for the Handicapped" center in their area.

Ann Fasset
Equestrian Therapy Program
1566 Fairway Drive
Lima, Ohio 45805



This picture is of our 3-wheeled Silver King tractor made by the Fate, Root and Heath Co. in Plymouth, Ohio in 1946. We think it's one of the best small tractors ever built so we recently restored it and now we take it to antique tractor pulls where I've already won two first-place trophies and one second-place.

Our model 42 row crop Silver King has about 29 hp., powered by a Continental engine. My father bought the tractor new. I once saw a picture of a 1929 Silver King but I'm not sure what other years it was made.

Don Dagle
906 8th
Sibley, Iowa 51249

We'd like to set the record straight on the difference between Red Waddle and Red Wattle hogs. Red Waddle hogs (spelled with two "d"s") originate with the late H.C. Wenglar, of Jacksonville, Texas. Red Wattle hogs (spelled with two "t"s") originate with Robert Prentice (Rt. 1, Box 112, Terril, Iowa 51364). Our stock is Red Wattles from Mr. Prentice, who owns the largest breeding herd in the U.S.

Mr. Prentice has raised Red Wattles for about as long as Mr. Wenglar and

he also bought his original stock from farmers in the back woods of Texas. He bought from some of the same people as Mr. Wenglar.

We own 29 registered sows and 3 large registered boars and feel that your magazine has done an injustice to the breed by looking at just from Mr. Wenglar's viewpoint. We love our Red Wattles and feel they are one of the most productive and hardy breeds ever developed. The boars are aggressive and the sows farrow consistently large litters of 11 to 14 pigs. When crossbred with more established breeds they often produce a superior animal. Much of this we attribute to the careful breeding of Mr. Prentice, who could have sold every animal he raised for a premium but nevertheless bred carefully to develop superior animals.

Diane & Gerald Blaise
Leonard, Mo. 63451
(ph 816 762-4621).



I thought FARM SHOW readers would get a kick out of this "mule" mailbox my father-in-law, Dr. Jack Couk, made for us for Christmas. The body is constructed out of oak logs.

After painting the facial features on an ordinary mailbox, he cut out metal ears and attached them. Also, a frayed rope was put in place for the tail.

It certainly has caused a lot of second and third looks from passersby. We even had one car drive off into the ditch on his third look. Now it's easy to tell people where our place is. We just say "look for the mule mailbox."

Paulette Couk
Rt. 5, Box 401G
Carthage, MO 64836



FARM SHOW readers who've read about our floor mats and other products made from old tires often ask how much of the tire we use. My answer has always been, "Everything but the bead" since I'd never come up with a practical way to use the leftover bead after we cut the rubber. Now we've finally come up with this unique "tire-bead furniture". The stools have a nice, springy sitting action that everybody seems to like.

Now when people ask me now how much of the tire I use, I say, "Everything but the squeal".

Ken Winans
Winans Recycled Tires
Box 1815
Binghamton, N.Y. 13902

You Asked For It

EDITOR'S NOTE: Looking for the manufacturer or marketer of a product you'd like to buy or get repaired? Or for an item you read about in a previous issue of FARM SHOW?

We'd be happy to do what we can to help. If we don't have the answers, we can probably put you in touch with someone who does.

Contact: Research Dept., FARM SHOW Magazine, P.O. Box 1029, Lakeville, Minn. 55044 (ph 612 469-5572).

Where can I buy a changeover kit to help solve electrical problems on my 4000 series Deere tractor? We have trouble keeping the battery charged. (Juniper Dale Farms, Rt. 3, Box 281A., Nazareth, Penn. 18064)

FARM SHOW'S Vol. 10, No. 4 issue featured an electric changeover kit that starts the tractor on 24 volts and then switches back to 12 volts for everything else, which solves the battery charging problem. Contact: FARM SHOW Followup, Edmund Kilzer, Prairie Sales, Rt. 1, Box 28, New Leipzig, N. Dak. 58562 (ph 701 824-2434).

I'd like to build a self-propelled chopper using components and equipment salvaged from around my farm. I need a few additional parts so I'm looking for a junked New Holland 1880 self-propelled corn chopper. Can anyone tell me where to find one? (Bob Stewart, Rt. 2, Box 2552, Zillah, Wash. 98953 ph 509 829-5783).

I saw a story in FARM SHOW about a device you wear on your leg that takes the pressure off the knee when you kneel. Where can I get more information? (Ted Schmell, Rt. 4, Mora, Minn. 55051).

For information on Craftseats, contact: FARM SHOW Followup, Conmea Inc., Box 1426, North Bay, Ont. P1B 8K6 (ph 705 476-6292).

Where can I find a front-wheel drive add-on system for my International 826 tractor? (Curtiss Berndt, 5247 N.U.S. 31, Free Soil, Mich. 49411)

In Vol. 8, No. 6 FARM SHOW featured an add-on front axle to convert 2-WD to MFWD. Contact: FARM SHOW Followup, Elwood Mfg. Co., 105 South St. Louis St., Elwood, Ill. 60421 (ph 815 423-5591).

Another after-market add-on front-wheel drive system is available from Spicer Mobile Off-Highway Axle Div. of Dana Corp., P.O. Box 2424, Fort Wayne, Ind. 46801 (ph 219 483-7174).

FARM SHOW had an article once on a weigh scale made from a tire filled with water. Where can I get instructions on building one? (Leurs Parish Jr., 3205-A 1500 E. Wendell, Idaho 83355).

A do-it-yourself book that describes how to build the scale is available from: FARM SHOW Followup, Bradbury Controls, Ltd., P.O. Box 4, Ross-On-Wye, HR9 6EV England (ph 0660 890599). Send \$8.40 in British funds or a \$10 bill.

What's the address for the retired farmer who trained oxen to pull a wagon for parades, reunions and other get-togethers? (Jerry Turner, Rt. 1, Box 112, Mount Cal, Tex. 76673).

In Vol. 10, No. 5, we listed the wrong address for Joe Fry. Readers can contact him at: FARM SHOW Followup, Joe Fry, 11707 CR. 16, Middlebury, Ind. 46540 (ph 219 825-2503).

Where can I get a quick cylinder adjuster kit for my Gleason combine? (James Trevillyan, Box S-7, Wasta, S. Dak. 57791).

The "Quick Adjust" kit which enables you to raise or lower the cylinder to unplug it or adjust it to varying crop conditions is available from: FARM SHOW Followup, K & M Mfg., Box 109, Renville, Minn. 56284 (ph toll free 800 328-1752; in Minn. 800 992-1702).

Editor's Note: In Vol. 8, No. 6, FARM SHOW featured a report on a new tool that separates two-piece livestock ear tags so you can save and reuse tag sections and correct tagging mistakes. The inventor, Floyd Simpson, says it'll unfasten almost any two-piece tag. Simpson says the Tag-Save-R is now on the market. It sells for \$18.50, plus \$1.50 shipping. Contact: FARM SHOW Followup, Floyd Simpson, Ovas, Inc., 44680 Bel-Cent Road, Belmont, Ohio 43718 (ph 614 886-2510).

I'm looking for a good filter system for a domestic well. Our current filter system removes particles down to 5 microns, but the water is still "murky" with a clay-like particles suspended in it. We need something better. (Vergil Patrick, Rt. 3, Box 6, Cisco, Tex. 76437).

Recently, FARM SHOW had an article on a mini straw-hay baler. Where can I get information on this item? (William W. Gessner, Rt. 3, Box 852, Mansfield, La. 71052).

For information on the mini-baler, (Vol. 10, No. 5) contact: FARM SHOW Followup, Robert Colson, Rt. 3, Elwood, Ind. 46036 (ph 317 552-6097).

Editor's Note: A number of readers have contacted us inquiring about U.S. and Canadian distributors of the Willibald rock crusher made in Germany. The crusher pulverizes rocks into powder on the go in the field where they lie. The U.S. and Canadian distributors are: Farrod Equipment Inc., 3924 Starlite Drive, Ceres, Cal. 95307; Marwald of Florida, Inc., P.O. Box 1330, Eaton Park, Fla. 33840; Benson Farm & Garden Equipment, 910 McCurdy Road, Kelowna, B.C., V1X 2P7 Canada; and HWE Agricultural Technology Ltd., P.O. Box 5006, Station F, Ottawa, Ont. K2C 3H3 Canada.

Has FARM SHOW featured any stories on horse-drawn round bale movers? We use horses to feed cattle during winter months. (Fred Cahill, R.R. 2, Strathroy, Ont. Canada N7G 3H4).

In Vol. 9, No. 2 (back issues available for \$2.00), we featured two horse-drawn bale movers. For information, contact: FARM SHOW Followup, Harlan Jacobsen, R.R. 3, Box 59, Newell, S.D. 57760 (ph 605 886-4497). Or, contact: FARM SHOW Followup, Herts Welding, Palmer, Kan. 66962 (ph 913 692-4289 or 4568).

What's the name and address of the inventor-manufacturer of the new grain-saving deflectors that mount on the inside combine sidewalls to stop grain loss on sidehills? (Rick Van Zante, Rt. 4, Pella, Iowa 50219).

Contact: FARM SHOW Followup, Leland H. Harris & Sons, Rt. 1, Miami, Mo. 65344 (ph 816 529-3408).

Where can I get a book of tractor specs that list horsepower, engine size, tractor weight, and other information? (Gary Curd, 3180 Cox Howard Rd., Versailles, Ky. 40383)

For specs on tractors and other farm equipment, get the Implement & Tractor Red Book. The current issue's available for \$5.00, plus \$3.00 postage and handling (\$3.90 for foreign orders). Contact: FARM SHOW Followup, Implement & Tractor, P.O. Box 1420, Clarksdale, Mississippi 38614 (ph 601 624-8503).

A number of readers have inquired about antique tractor clubs and newsletters for their favorite tractor "color". Here's a wrap-up of ones we know about (if you know of others, please let us know):

"A Golden Arrow", (Cockshutt), John Kasinski, N7209 Hwy. 67, Mayville, Wis. 53050; "Canadian Fordson Tractor Club", Tom Brent, Box 150, Dewdney, B. C. VOM 1H0 Canada; "Fordson Tractor Club", Jack Hoald, 250 Robinson Rd., Gave Junction, Ore. 97523; "Green Magazine" (Deere), Richard Hain, R.R. 1, Bee, Neb. 68314; "Historical Construction Equipment Assn.", 485 S. Hillside Dr., Canfield, Ohio 44406; "MM Correspondent", (Minneapolis-Moline), Roger Mohr, Rt. 1, Box 153, Vail, Iowa 51465; "90N-2N-8N Newsletter", (Ford), Gerard Rinaldi, 154 Blackwood Lane, Stamford, Conn. 06903;

"Old Abe's News" (I. J. Case), David T. Erb, Rt. 2, Box 242, Vinton, Ohio 45686; "Old Allis News", Nan Jones, 10925 Love Rd., Bellevue, Mich. 49021; "Oliver Collector's News", Dennis Gerszewski, R.R. 1, Box 44, Manvel, N. Dak. 58256; "Prairie Gold Rush", (Minneapolis-Moline), Roger Baumgartner, Rt. 1, Walnut, Ill. 61376; "Red Power", (International), Daryl Miller, Box 277, Battle Creek, Iowa 51006; "Rumley Newsletter", (Advance Rumley), Cass Bowyer, P.O. Box 12, Moline, Ill. 61265; "Two Cylinder Club", (Deere), Jack Cherry, P.O. Box 2275, Waterloo, Iowa 50704; and "Wild Harvest", (Massey Harris, Massey Ferguson and Wallis), Keith Oltrogge, 101 S. Powell, P.O. Box 529, Denver, Iowa 50622.