



An angle iron hinge point chains to step bumper. To lift bale, a spear is pushed through center of bale by hand and chain loops on bale arms are slipped over spear ends.

ONE MAN CAN MOUNT AND DISMOUNT IN A MINUTE OR LESS

Simple New Bale Mover Chains To Pickup Bumper

It takes only a minute or less to mount or dismount this simple and inexpensive new big bale mover on your pickup, according to farmer-inventor Myron Wigness, Admiral, Sask., who says one man can easily pick up the 150-lb. bale mover to mount it.

Wigness came up with his bale mover because he didn't like other bale handlers on the market that tied up the bed of the pickup when not in use. To install his mover, which fits any pickup with a step-up bumper, you only have to drill one 1/2-in. hole for an anchor near the front of the box. The small anchor is the only piece that bolts to the truck.

To mount the bale mover, you simply set the angle iron hinge point of the mover on the bumper and chain it to the frame of the pickup, securing it tightly with a load binder or turnbuckle. The bale handling arms then pin to the hinge point with two pins and the

winch is hooked to the anchor in the pickup bed.

To pick up a bale you simply back tightly into bale, push the bale spear through the center of the bale, put the chain loops on the bale arms over the bale spear, and use the hand-cranked winch to lift the bale into the pickup. To unroll a bale cut the twines, lower it to the ground, and drive forward.

The bale mover handles any size bale and, when not in use, the bale arm hinge point can be left chained to the bumper, if desired. Sells for \$390 (Canadian). Wigness notes that the bale mover can also be used as a deck extender for hauling lumber or other lengthy loads.

For more information, contact: FARM SHOW Followup, Wigness Construction, Box 14, Admiral, Sask. S0N 0B0 Canada (ph 306 297-6264).

SAVES UP TO 5 BU. PER ACRE

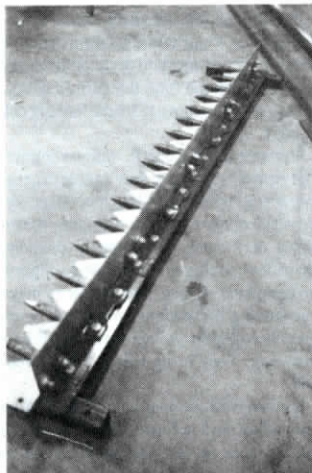
Cutterbar Grain Saver Also Blocks Dirt, Rocks

Grain can't roll off the platform and rocks can't roll on with a new grain saver bar invented and manufactured by W.A. Johnson, Louisville, Kent.

Johnson got the idea after computing that he was losing 2 to 5 bu. of soybeans per acre when combining. "Beans shatter and roll off the platform. I wanted to find a way to keep them on the header until the rest of the crop material could pull them in or until the end of the field when I can raise the head up to tip grain into the back of the header."

The 3-in. tall sheet metal barrier that Johnson came up with mounts just behind the back of the sickle bar and runs across the whole width of the cutterbar. It's held in place with right angle brackets that mount on existing sickle guard bolts.

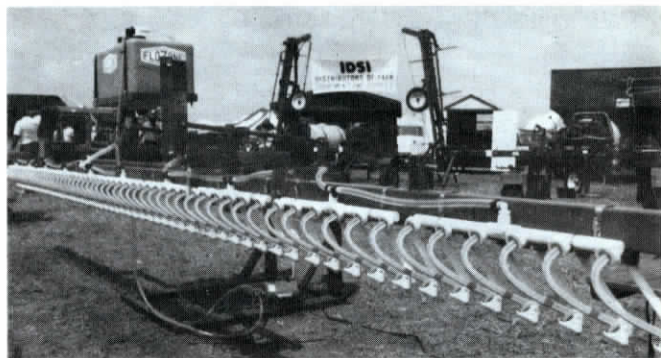
Johnson notes that when he started testing the grain saver he discovered that in addition to saving grain it also keeps rocks, dirt and other foreign objects out of the header. "Farmers tell me that even if it never saved a kernel of grain it would be worth having on their cutterbars," says Johnson, adding that the grain saver also helps short grain crops feed better because it keeps short-stemmed material on the platform until the reel can pull it in.



The 3-in. tall barrier mounts just behind sickle bar across full width of cutterbar.

It's designed to fit any cutterbar for use on any crop and sells for \$20 per foot.

For more information, contact: FARM SHOW Followup, W.A. Johnson, 12406 Taylorsville Road, Louisville, Kent. 40299 (ph 502 267-5263).



Chemical flows out over curved rods so that it comes into direct contact with crop.

RECYCLES FREE-FLOWING CHEMICAL

New Weed Wiper Works "Better Than Rope Wick"

A first-of-its-kind herbicide applicator that uses specially designed "flow control" rods to bring free flowing herbicides into direct contact with tall-growing weeds works better than rope wick applicators, according to the manufacturer, Acra Industries, Colfax, La.

"Our Flozone applicator is more efficient and produces more consistent weed kill than any other contact-type applicator," says John Richardson, owner. "It's a totally different technology from wick-type devices. Wick-type applicators dry out rapidly when contacting weeds and it takes some time for the wick to become saturated again. That's why a wick-type applicator often requires two passes to get adequate weed kill. If you supply excess chemical to the wick, it'll drip and may cause crop damage."

The Flozone applicator consists of a boom fitted with curved rods spaced 4 in. apart. Chemical gravity flows from a tank above the boom to the rods. It flows down freely over the surface of the rods and is held on by surface tension as it follows specially designed grooves. Chemical flows onto weeds and grasses as they come into contact with the rods. Chemical that's not wiped onto

weeds flows into a reservoir at the bottom of each rod and is then filtered and returned to the tank.

"The rods always remain full of chemical. Hardly any weeds escape, even in heavy infestations, because the Flozone rods never go dry," says Richardson. "Weeds are more thoroughly covered with chemical, which greatly increases herbicide effectiveness. At travel speeds up to 5 mph, a water/herbicide ratio of 20 to 1 is typically adequate with the Flozone, compared to a 2 to 1 ratio commonly used with rope wick applicators."

The Flozone applicator boom fits together in 24-in. wide sections with 6 rods per section so it can be built to any length. It can also be retrofitted to mount in place of an existing rope wick.

A 6-row applicator equipped with a 20-ft. boom, sells for \$3,942 and an 8-row applicator equipped with a 26-ft. boom sells for \$4,970. Prices include lift assembly, reservoir tank, pto drive impeller pump, manual shut-off valve, tubing and clamps.

For more information, contact: FARM SHOW Followup, Acra Industries, Rt. 3, Box 81, Colfax, La. 71417 (ph 318 627-5504).

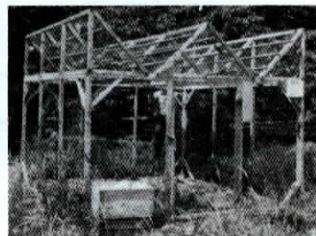
"OUR BEST DAY SO FAR IS 53 STARLINGS"

Giant "Walk In" Trap For Pest Birds

"I first read about it in a magazine in 1964 but I never built one until 1984. We've used it every year since catching hundreds of starlings, sparrows and other pest birds," says Jonas E. Borntrager, Clark, Mo. about the giant "walk in" bird trap he built.

Borntrager says he caught 53 starlings on his best day last summer. "I know one farmer who caught more than 700 sparrows in one summer."

The trap is 6 ft. high at the peak, 8 ft. long and 6 ft. wide. An entrance grate at the bottom of the "V" at the top of the trap is just large enough for birds to slip through. Once inside, they flock to perches inside the trap and can't find their way out again. Birds are lured into the trap by live decoys - Borntrager says you should leave at least two birds inside each time you empty the trap - and a generous supply of grain and drinking water. Once inside the trap, birds are so happy



There's a narrow entrance grate at the bottom of each "V" at the top of the trap.

with the food and water that they attract other birds.

Borntrager has a 1-page instruction sheet that shows how to build the trap and what materials are needed. For a copy, send \$1 to: FARM SHOW Followup, Jonas E. Borntrager, Borntrager's Leather Shop, Rt. 1, Box 78, Clark, Mo. 65243.