



Combination Wet-Dry Feeder

It combines the best of wet and dry feeders, says Delphi Products of its new combination wet-dry feeder, billed as "the first and only one of its kind in the industry."

Dry feed is dispensed through an upper level opening. Pigs can eat dry feed at this level, or they can "nose" the feeder's agitator to drop dry feed to the bottom level for mixing with water via two nipple waterers.

"Pigs themselves choose how wet or dry they want their feed," explains Blair Underhill, sales manager. "They quickly learn which levers to work to create the

combination wet-dry mix they prefer.

"A wet feeder is often too wet, and a dry feeder is too dry, or too far from water. Our new combination feeder solves the problems, giving pigs a choice of completely wet or dry feed, or anywhere in between," Underhill points out.

The new feeder, made of 304 stainless steel (all welded construction) holds 1.5 bu. and sells for \$85.

Contact: FARM SHOW Followup, Delphi Products, P.O. Box 256, Delphi, Ind. 46923 (ph 317 564-3752; in Indiana, call toll free 1 800 382-7903).

Deluxe Boot Scrubber

"In most cases it completely eliminates the need to change boots to prevent disease when going between barns," says the French manufacturer of a deluxe new boot scrubber that scrubs bottom and sides of boots and sprays them with disinfectant and soap at the same time.

The stainless steel unit mounts at floor level over or near a drain. Spray disinfectant is applied to the boot from both side brushes and the bottom brush. A hand trigger at waist level controls spray. There's also a support bar at waste height to help keep balance. Sells for \$241.

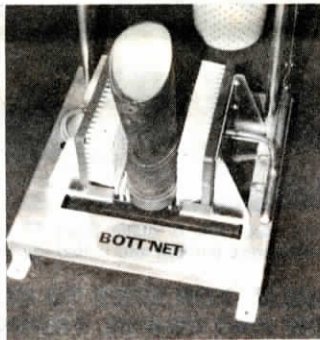
Contact: FARM SHOW Followup, Siemat, 3 rue Paul Painleve, BP 66, 89400 Laroche Migennes, France (ph 86 80 21 23).

"Waste Proof" Sow Feeder

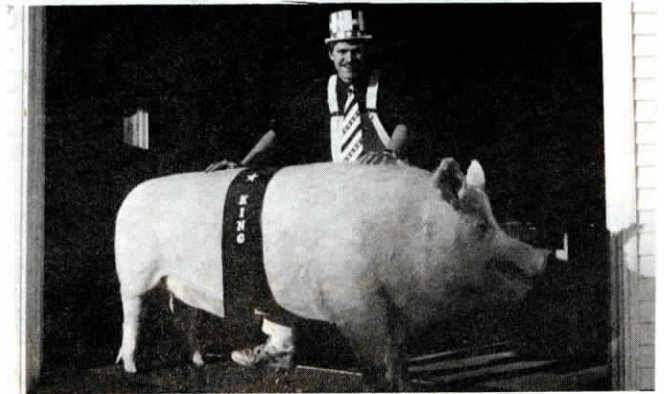
The new "Baffle Matic" sow feeder from J and J Equipment, of Hopedale, Ill., automatically dispenses feed with virtually no waste, according to Joe Slager, manufacturer.

It features a unique stair-step baffle system which controls feed flow, providing sufficient feed in the pan for consumption but not enough to waste. The baffles hold feed back until what's in the pan has been cleaned up. The supply tube is equipped with an agitator which the sow bumps as she eats. However, regardless of how aggressively she works the agitator, it won't drop down more feed until she's cleaned up what's already in the pan. The baffles and agitator work together to automatically dispense a wide variety of feeds without waste -- including "sticky" high moisture or high fat rations -- and without bridging or plugging, Slager points out.

Baffle Matic, priced at \$69, adapts to most farrowing crates. The bottom pan (12 by 15 in. by 5 in. deep) is made of cast iron.



Contact: FARM SHOW Followup, J and J Equipment Inc., P.O. Box 211, Hopedale, Ill. 61747 (ph 309 449-5442).



Ron Lieske with King, who weighs a mere 180 lbs. stuffed.

"WORLD'S LARGEST"

Stuffed 890 Lb. Boar Pig "Educates and Entertains"

It's hard to overlook "King," an 890 lb. stuffed Large White boar who's become a popular, eye-catching celebrity at fairs, trade shows and other events.

Billed as the "World's Largest Mounted Domesticated Boar," King weighed 890 lbs. at his peak at 5 years of age. After going through the taxidermy process, he is solid styrofoam with his tanned hide sewn and glued to a mold. Weighing a mere 180 lbs. stuffed (plywood base and cover included), he is easily transported from place to place to help promote Lieske Genetics, a family owned and operated seedstock company headquartered at Henderson, Minn. Lieske Genetics uses "tools" such as King to attract other similar family operations to their product line. That product line is the Large White and Landrace breeds they sell and service to hog producers across the United States and foreign countries.

"Not only is King eye-catching and entertaining, but he also serves as a real educational prop," says Ron Lieske, an innovative promoter who invested \$2,000 to have King stuffed and preserved. "Many people have never seen

a mature Large White boar. Having King in our booth at trade shows helps us explain to people why these imported bloodlines are shaped and designed to be so extra productive."

Dale Selby, a well-known Nicolett, Minnesota taxidermist, had to use 40 photographs and more than 60 measurements to ensure that the King's "stuffed" configuration resembled the real thing. "I've mounted a life-size Alaskan moose, a bugling elk and a Kodiak bear, but this pig was the ultimate challenge and one of the toughest projects I've ever done," notes Dale. It took him 164 hrs. to finish the project. Typical projects take only about 10 hrs. to complete, using pre-made molds. But no such mold was available for King. Selby fashioned one from a hand-carved styrofoam mold, and used "live" photos and measurements for reference.

For more information, contact: FARM SHOW Followup, Lieske Genetics, Rt. 1, Henderson, Minn. 56044 (ph 612 248-3218).

Low-Cost Creep Divider Panels

"Works great and it's inexpensive," says J.D. Lawson, designer-manufacturer of hog equipment who's discovered that 3/4 in. Aspenite particle or chip board, purchased at a local lumber yard, makes excellent creep-area divider panels for farrowing stalls. One 4 by 8 ft. sheet makes two 2 by 4 ft. end panels, and one 2 by 8 ft. side divider panel. Lawson recommends using 2 by 2 in. angle iron for corner braces to support the panels. He advises to first drill the bolt holes for the braces, then coat the entire panel -- and the drilled holes -- with clear polyurethane, or any high quality marine varnish, to prevent moisture absorption.

Lawson, designer-manufacturer of the Sensible Sow Crate "which allows you to wean more pigs per square foot than any other system on the market," has tested Aspenite particle board partitions in conjunction with his crates on four different farms for the past four years. His conclusion: "It has held up very well with no chewing or other problems. It's cheap, warm, sound deadening and durable."

Contact: FARM SHOW Followup, J. D. Lawson Inc., Rt. 1, Box 83, Leesburg, Ill. 46568 (ph 219 453-3735).

