

ALLOWS STUBBLE AND WEEDS TO STAND FOR BETTER SNOW COVER

New "Undercutter" From Haybuster

"We've had a lot of interest in this first demonstration model," says a spokesman for Haybuster, of the company's new Undercutter tillage tool.

Instead of chisels or shovels, it's equipped with 32 in. wide sweeps pitched at a 63° angle. The idea: To cut weeds and stubble off 2 to 2½ in. below the surface. This kills the weeds, yet allows both weeds and stubble to stand over the winter to catch and hold snow — and to help prevent soil erosion.

Cutting angle of the sweeps, which are aligned to overlap about 6 in., is adjustable. Shanks are available with spring-loaded automatic reset trips. Swivel coulters run directly in front of each shank to cut heavy layers of trash. "We've tested it under a wide range of soil conditions and have had no problem whatsoever keeping the sweeps in the ground," a spokesman told FARM SHOW.

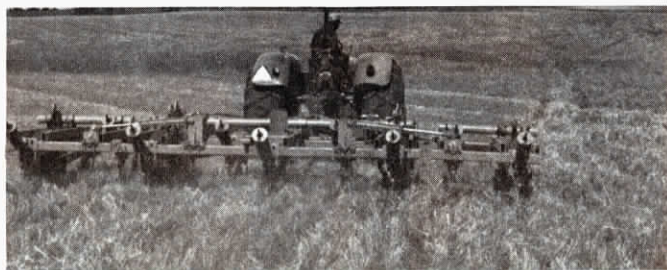
Estimated cost of a 5 shank Undercutter (11 ft., 4 in. cut) with automatic reset shanks is right at \$3,000. The same unit with 5-sweep wings on each side (33 ft. total width) will run



Note the 20 in. coulters in front of each shank for cutting through heavy trash.

about \$8,000 (with automatic reset shanks).

For more details, contact: FARM SHOW Followup, Haybuster Mfg., Box 1008, Jamestown, N. Dak. 58401 (ph 701-252-4601).



New tillage tool is equipped with 15 32-in. sweeps.

APPROVED FOR POTABLE DRINKING WATER

Tailormade Water Tank For Pickups

New for pickups is a flat bottom polyethylene tank that holds 515 gal. of water for spraying, drinking or whatever.

"It's one of the few tanks that can be used for hauling potable drinking water," explains a spokesman for Industrial Farm Tanks, Lewiston, Ohio.

The tank is designed to sit forward in the pickup box with the rear half being indented so as to clear the fender wells. Weight of the empty tank is 160 lbs., which makes it relatively easy for one man to slide the tank in or out of the pickup bed.

The manufacturer says it can't specifically recommend the tank for transporting fuel because the polyethylene material will melt if exposed to a high flame. The material itself, however, is not adversely affected by gasoline or diesel fuel.

A 2 in. outlet fitting is standard. Other size fittings can be obtained on special order. Four hold-down devices help provide safe, easy trans-



Polyethylene tank is indented along each side to clear the fender wells.

port. Built-in ultraviolet inhibitors keep the sun's rays out and help add to the tank's life, which the manufacturer estimates at "at least 10 to 15 years".

Sells for \$270.

For more details, contact: FARM SHOW Followup, Industrial Farm Tanks, 12163 Route 274 West, Lewiston, Ohio 4333 (ph 513-843-2117).

CHANGE SECTIONS IN LESS THAN A MINUTE

Handy New Tool For Repairing Sickles

Changing sickle sections is one of those jobs that can waste the better part of an afternoon if you don't have the right tools to make it simple. The Johnson Sickle Servicer is several of the "right" tools combined into one labor-saving device.

With the device you can repair most any type of sickle bar for mower, combine, windrower or forage harvester. The Servicer is designed to handle either mower (extended-back) or combine (flush-back) sections without the use of extra attachments and is equipped to rivet either oval head or countersunk flat-head rivets.

"With our Sickle Servicer, you don't have to hack away at the cutter bar with a cold chisel and run the risk of bending the bar to remove old sections. And, it will pay for itself by eliminating costly delays." Bernie

Johnson, President, Johnson Farm Machinery Co., Woodland, Ca., told FARM SHOW.

Replacing a sickle section is a three-step job. First, the damaged section is laid along the lower level — one stroke of the handle shears off the section. Second, the cutter bar is shifted to another part of the tool and the rivets are punched out. Third, the new section is riveted to the cutter bar with another stroke of the handle.

The Johnson Sickle Servicer is 16 in. high, 27 in. long and 4 in. wide. Weighs approximately 28 lbs. Sells for \$79.00.

For more details, contact: FARM SHOW Followup, Bernie Johnson, President, Johnson Farm Machinery Co., Inc., P.O. Box 1237, West Kentucky Ave., Woodland, Ca. 95695 (ph 916 662-1788).



Johnson Sickle Servicer removes and replaces sickle sections for all mower, windrower and combine sickle bars. It will remove old sections, punch out old rivets, and rivet in new sections.