



New Deere planter toolbar pulls from the tractor's 3 pt. hitch in both the field and road position.

**FOLDS FORWARD AND IS COMPLETELY CONTROLLED FROM THE TRACTOR SEAT**

## Deere Shows New Planter Toolbar

Deere and Company, which normally doesn't bring out new equipment until it's in production and readily available, surprised a lot of people by bringing out a prototype front folding planter toolbar that reportedly won't be available for use by farmers until the 1979 planting season.

There's a lot of similarity between it and the front folding toolbar we told you about in the last issue of FARM SHOW, which was designed and is being manufactured by Gene Shoup, Bonfield, Ill. In addition to folding forward for transport, both makes are completely controlled right from the tractor seat and pull from a 3-pt. hitch in both the field and road position.

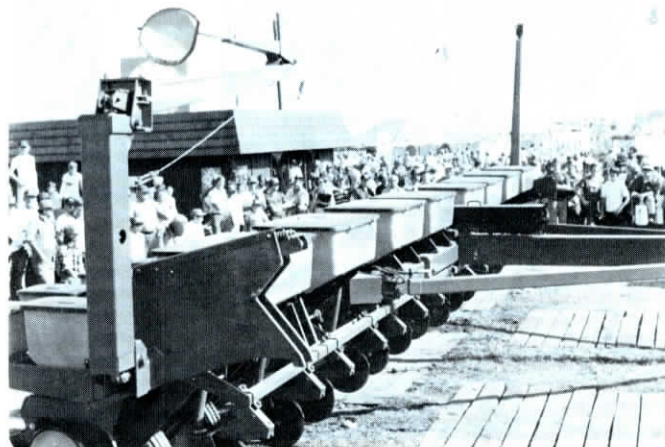
Deere's prototype model 7000 toolbar accommodates 16 30-in. rows, or 12 38-in. rows. For transport, the outside 5 rows on each end fold forward, reducing the entire unit to 14 ft., 10 in. for transport.

The toolbar planter, in transport position, rides on the four wheels of the center section and pulls (via the tractor's 3 pt. hitch) like a long two-wheel trailer. It's equipped with two master cylinders — one for controlling the wing wheels and one for the four wheels on the center section. The outer sections flex up to 12° to follow contour of the ground.

Deere officials recommend using a model 4640 or larger tractor to pull the toolbar equipped for 16 30-in. rows. It weighs right at 13,000 lbs. with the planter boxes fully loaded.

It's expected that retail cost, complete with Max-Emerge planting units, double fold "low profile" markers and a complete monitoring system, will run in the neighborhood of \$28,000.

For more details, contact: FARM SHOW Followup, Deere and Co., Advertising Dept., John Deere Road, Moline, Ill. 61265 (ph 309 752-8000).



Model 7000 toolbar accommodates 16 30-in. rows, or 12 38-in. rows. Note "low profile" markers.



Some "Bean Walker" riders use a corn knife. Others prefer using a hook-type knife welded to a long pole. In addition to "walking" bean fields to remove weeds and volunteer corn, the new loader-mounted Dixon Bean Walker is being used to salvage downed ear corn.

**CAN ALSO BE USED TO SALVAGE DOWNED EAR CORN**

## Bean Walker Mounts on Tractor Loader

Coaxing kids of all ages into walking bean fields should be a snap with the new "Bean Walker" attachment from Dixon Mfg., Harlan, Iowa.

Available with 3 or 4 seats, it easily mounts on most makes of tractor loaders. Riders sit down on the job, each taking two rows.

"Because of the severe corn borer problem in some areas this past year, there's a lot of interest in using our new Bean Walker to salvage downed ear corn," a company spokesman told FARM SHOW two weeks ago.

The basic model mounts on most any tractor loader and can be equipped with 4 seats for taking eight 30-in. rows, or three seats for six 40-in. rows. Optional fold-up wings at each end for carrying additional riders are also available.

Previous issues of FARM SHOW have featured various types of self-propelled machines which carry from one to four riders. The Dixon

"Bean Walker" is the first and only one designed for mounting on a tractor loader, according to the manufacturer.

"Virtually every farmer already owns both a tractor and a loader. By using this existing equipment, we provide the same convenience at considerably less cost since you don't have to buy an expensive power unit to propel our unit," a spokesman points out. "What's more, the farmer running the tractor is always right behind the workers where he can see how good a job they're doing."

Cost of the new loader-mounted "Bean Walker" with four seats is \$860. The unit folds up for down-the-road transport. Umbrellas and mounting brackets, and seat belts, are optional.

For more details, contact: FARM SHOW Followup, Dixon Mfg., Harlan, Iowa 51537 (ph 712 755-5641).