



Dual "tall tires" equip bigger 2-WD tractors for the switch to narrow 22-in. rows.

"Tall" Tractor Tires For Narrow Rows

If you're thinking about switching to 22-in. or narrower rows, you'll want to take a look at "Tall Tires" that sugarbeet growers are using on their high horsepower tractors.

The 74-in. tall, 14-in. tread width wheels and tires were developed by Mike Keltgen, Olivia, Minn. Sugarbeet growers in his area were switching to 22-in. rows for corn and soybeans so they could use the same equipment on all three crops. The problem was that big tractors (150-200 hp) equipped with small tires to fit the narrow rows rode lower and farmers had problems with 3-pt. equipment height and reduced traction.

Keltgen's Tall Tires are duals with special-built rims and modified radial tires that make the tractor ride about 5-in. higher which is enough to make a big difference when using 3-pt. equipment, says Keltgen.

An added Tall Tires advantage, says Keltgen, is that the opening between the duals — where the crop row goes through — is tapered up in an inverted 'V' shape. This protects the crop from the tires and helps clear out mud.

Keltgen uses altered heavy-gauge 20.8 by 42 rims and puts on a 18.4 by 42-in. tires that have the shoulder and tread trimmed to fit.

Keltgen notes that he now has Tall



Tires raise tractor 5 in. to improve operation of 3-pt. equipment.

Tires in a 13.6 by 46 size for 90-200 hp. tractors. "The wheels have the same axle height as the 18.4 by 42's but don't have the same carrying capacity. However they work well in many applications such as cultivating," says Keltgen.

Tall Tires also work well with 22-in. ridge-till operation and are being tested on combines. Cost for four modified 18.4 by 42 in. tires and wheels, which fit most large-sized tractors, is \$4,500. Other sizes are available.

For more information, contact: FARM SHOW Followup, Keltgens, Inc., 204 N. Ninth St., Olivia, Minn. 56277 (ph 612 365-3611).

Narrow Wheels Convert 4-WD's To Row Crop Rigs

"Older model tractors with 4-WD have wheels too big for row crops. Consequently, they generally bring only \$10,000 to \$15,000 in trade. But, with our narrow wheels, you can convert those old machines into row crop tractors for only \$8,000 to \$10,000," says Mike Keltgen, of Keltgen's Inc., Olivia, Minn.

"They'll go anywhere and do everything a \$60,000 or more tractor with mechanical front wheel drive will do. Great in corn, soybeans and other row crops", notes Keltgen.

"We put on 16.9 by 38's to 18.4 by 32 tires," he adds, "so

you can run through 30-in. rows. The narrow wheel set-up uses bolt-on Straddle Duals from Kirchner, Dundee, Minn., and has the duals on each corner of the tractor."

Keltgen notes that you can remove the old wheels and have the new ones put on right at the farm. The narrow wheels will fit most 200 to 350 hp. tractors. They can be left on year-round and even used for tillage work.

For more information, contact: FARM SHOW Followup, Keltgen's Inc., 204 N. Ninth St., Olivia, Minn. 56277 (ph 612 365-3611).



The 3-pt. "zero turn" shredder has 100% fewer moving parts.

IT'S BELTLESS AND TURNS ON A DIME 3-Pt. Crop Shredder Takes 30-Ft. Swath

"It's the first and only crop shredder on the market that's 3-pt. mounted, beltless and takes a whopping 30-ft. swath in conventional or ridged rows," says Marv Nelson, president, of the new Multi-Crop Shredder from Loftness Specialized Equipment Co.

"The 3-pt. hookup gives it a zero turning radius and the drive line never bends when turning. It has over 100% fewer moving parts than a belt-driven shredder," notes Nelson.

The shredder is equipped with two gauge wheels which, by pulling a pin, turn for end transport down the road. "A youngster working alone can put the rig in field or road configuration in a matter of minutes without help," says Nelson.

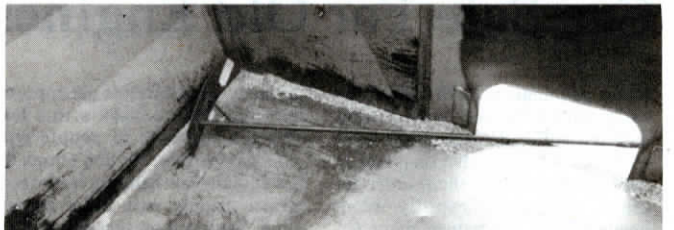
He points out that when a smaller 20-ft. model is 3-pt. mounted on a tractor equipped with duals and operated in 30-in. rows, there's a tractor

or shredder tire in every row to eliminate scalping on uneven ground. With the 30-ft. model, only one row is "tireless".

Reversible, flail-type knives on the new-style shredder can be raised high enough to chop stalks in ridged corn rows. The 30-ft. model's gear-box, rated at 200 hp, is equipped with a self-contained oil-cooling pump. The shredder's top cover is made of heavy 4 ga. steel. Field operating speed, behind a 140 to 150 hp tractor, is 4 to 6 mph.

List prices are \$13,995 for the 30-ft. wide model, \$9,555 for the 20-ft., and \$6,995 for a 15-ft. model. The 20 and 15-ft. models are also available "beltless" in pull-type models.

For more information, contact: FARM SHOW Followup, Loftness Specialized Equipment Co., Hector, Minn. 55342 (ph 612 848-6266).



Truck box "hoe" cleans box through rear dump chute.

New Safety-Hoe Cleans Out Truck Box Corners

The new "Safety-Hoe" developed by Jim Scharf, a Perdue, Sask. farmer, enables you to clean out those last few handfuls of grain caught in the rear corners of the truck box — without untarping the load, climbing up on the truck or using a scoop shovel.

To clean out the box you simply reach in with the "hoe" through the tailgate opening and scrape out every last kernel of grain. Key to the tool, says Scharf, is the 5-in. wide, 18-in. long curved blade with the handle offset to one side. He explains that the curve makes the hoe "pull itself into the grain so you don't have to force it

into the pile."

Scharf adds that another use for the Safety-Hoe is to stand it on end on the ground as a guide for backing trucks to the auger.

The all-steel Safety-Hoe, with 5-ft. long handle, sells for \$20 (U.S.); \$25 (Canadian).

For more information, contact: FARM SHOW Followup, Jim Scharf, Box 305, Perdue, Sask. SOK 3C0 (ph 306 237-4362).

In the U.S., contact: FARM SHOW Followup, Bill Ferris, R.R. 3, Rio Vista, Williston, N.D. 58801 (ph 701 774-8239).