

**LATEST NEW MODEL MOUNTS ON  
SELF-PROPELLED FORAGE CHOPPERS**

## Separate Engine Drives New-Style Snow Blower

Your smaller tractor, or your pickup, can handle a giant-size snow blower, thanks to new custom-built units introduced by Bob Equipment, Stanley, N.Y.

High capacity snow blowers, front-mounted on smaller tractors, are powered by a separate engine. If you own a self-propelled forage chopper, you'll be interested in the company's just-introduced 10 ft.-wide snow blower which mounts up front and runs off the chopper motor.

"We make a heavy-duty blower that we can custom-fit to most any tractor or pickup," says company representative Dick Calabrese. "You can buy less expensive snow blowers but they're not as rugged, or as well adapted to your equipment."

For one farmer, the company recently mounted a 7-ft. snow blower on the front of an 8N Ford, powering it with a rear-mounted 68 hp. Wisconsin diesel engine. A drive shaft under the chassis connects the two. Total cost was around \$6,000.

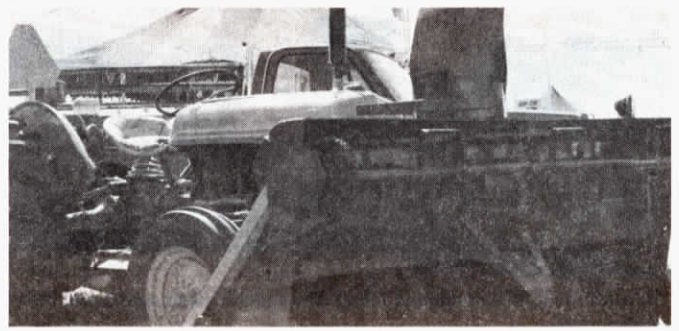
To power snow blowers front-mounted on pickups, the company mounts a 383 Chrysler engine and

hydraulic motor in the truck box, then runs hydraulic lines to the blower up front. "You can mount a blower as large as 8 ft. on a 3-4 ton truck and, if desired, run it off a drive shaft rather than hydraulics," says Calabrese. Cost for the auxiliary engine, hydraulics and snow blower for pickups is right at \$6,500.

Bob Equipment's latest snow-blowing innovation is mounting 10-ft. wide snow blowers on self-propelled forage choppers. The custom-built blowers replace the hay pickup and run off the chopper motor.

Up to now, all snow blower orders have been custom designed and built. "We build a quality unit with heavy metal all around. For example, we use 1 1/2 in. gearbox shafts whereas most other manufacturers use 1-in.," explains Calabrese. Snow blower sizes range from 5 to 10 ft. wide.

For more information, contact: FARM SHOW Followup, Bob Equipment Co., Inc., Rt. 5 and 20, R.D. 2, Stanley, N.Y. 14561 (ph 315 526-5195).



This 8N Ford is equipped with an 8 ft. snowblower powered by a 68 hp Wisconsin diesel mounted on back of the tractor.



To rig pickups for snowblowing, the company uses hydraulics, mounting an engine and hydraulic motor on the truck bed.

**DRUMS TURN IN OPPOSITE DIRECTIONS**

## New-Style Grain Cleaner Has 50% More Capacity

Counter rotating drums are the key feature of a new-style grain cleaner from David Manufacturing, Mason City, Iowa.

"Gives us 50% more capacity for trash and fines in the same size machine. By counter-rotating, both drums are able to turn at their optimum speed rather than at a compromise speed between the two," he points out.

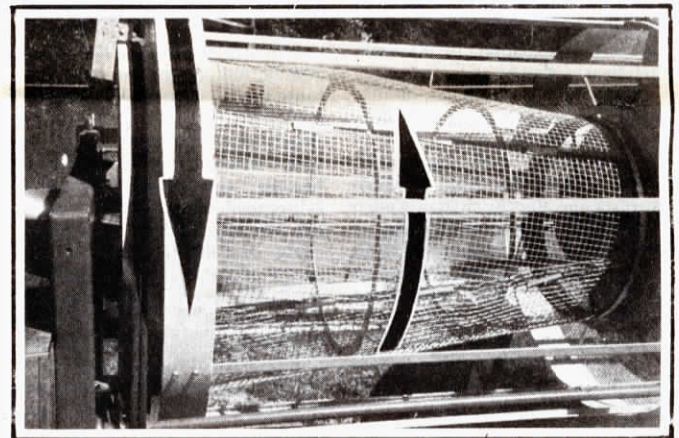
David's old-style grain cleaner featured two concentric, screened drums turning in the same direction, with a 6-in. gap between them. Bartz says that if that gap fills up at the spot

where fines drop through from the center drum, the machine essentially stops cleaning.

The new cleaner looks the same but the drums turn in opposite directions so there's more space between the two for trash to drop, thus increasing cleaning capacity.

"Besides speed, we also get 15% more fines and trash out of the grain," says Bartz.

Screens are available for virtually any type grains. Bartz says the cleaner also cleans corn kernels out of soybeans with about 60% efficiency. The other 40% of the corn kernels are



Drums counter-rotate on the new DMC grain cleaner, upping capacity 50%.

too nearly the size of the beans to separate.

Sealed bearings have been replaced with oil treated wooden bearings that never need to be lubricated. Bartz says wooden bearings last longer than metal and work better. "When dust, dirt and fines get into wooden bearings, they actually act like a lubricant, yet they'll ruin a sealed bearing," he points out.

Thanks to the new drum design, David Manufacturing has been able to replace its popular 548 model, which had a 48-in. drum, with a new model 44. It has a smaller 44-in. drum, yet has the same speed and capacity—about 2250 bu. per hour in 15% moisture corn.

The 44 features an 8-in., 11 ft. long feed-in auger with a totally enclosed motor that swings in a full half circle.

A single 1-hp. motor powers both drums.

The new cleaner also features a bubble leveler to level it on any contour ground, using a front leveling jack. "It's a simple innovation that eliminates a lot of guesswork and trouble we've had in the past," says Bartz. All models are mounted on trailers rigged for road transport.

A new, larger model with a 54-in. outside drum features a 10-in. fill auger, along with a 4-in. trash auger used to load trash and fines off the ground into wagons or trucks. It's rated at 3000 bu. per hour.

For more information, contact: FARM SHOW Followup, David Manufacturing Co., 1600 12th Street N.E., Mason City, Iowa 50401 (ph 515 423-6182).



DMC's model 54 cleans 3,000 bu. per hr. and has a 4 in. trash auger for cleanup.